

**CO-LIVING**

**CAPSTONE PROJECT**

**KARA SEILER**

**SPRING 2019**

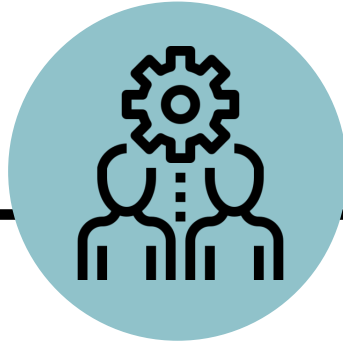
THE

# DESIGN OBJECTIVES



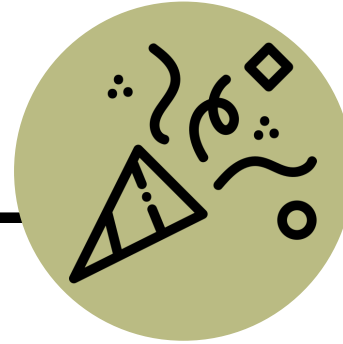
## LIVE

The co-living floors will provide a place for people to live in an “intentional community”



## WORK

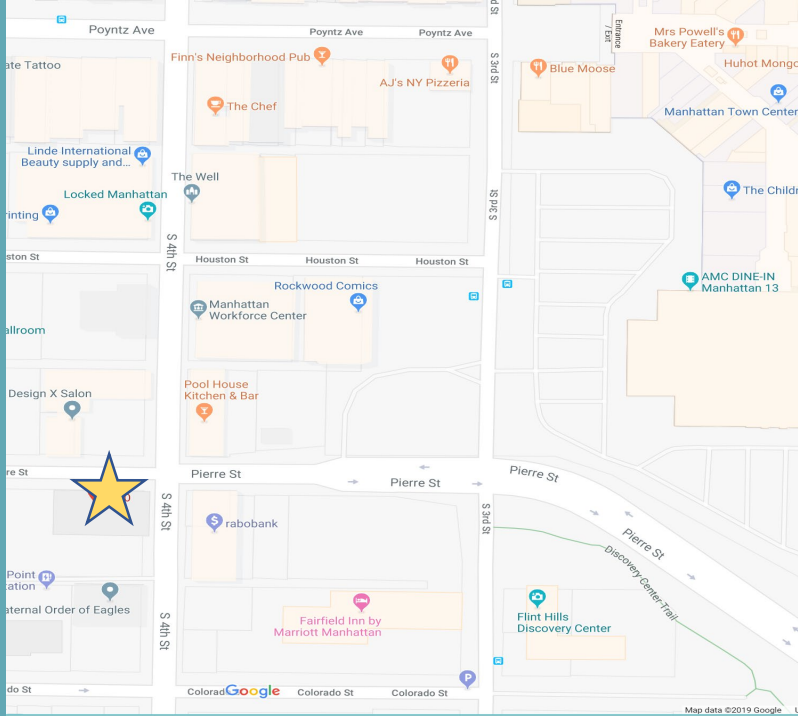
The coworking space will provide a place for people to work in a shared and collaborating way



## PLAY

The communal entertainment floor will provide a place for people to play, relax, and relieve stress in a community environment

# THE LOCATION



**302 S 4th Street, Manhattan, KS**

## Near Downtown Manhattan:

- Retail shops
- Restaurants
- Shopping Mall
- 2 miles away from the KSU campus
- 17 miles from Fort Riley



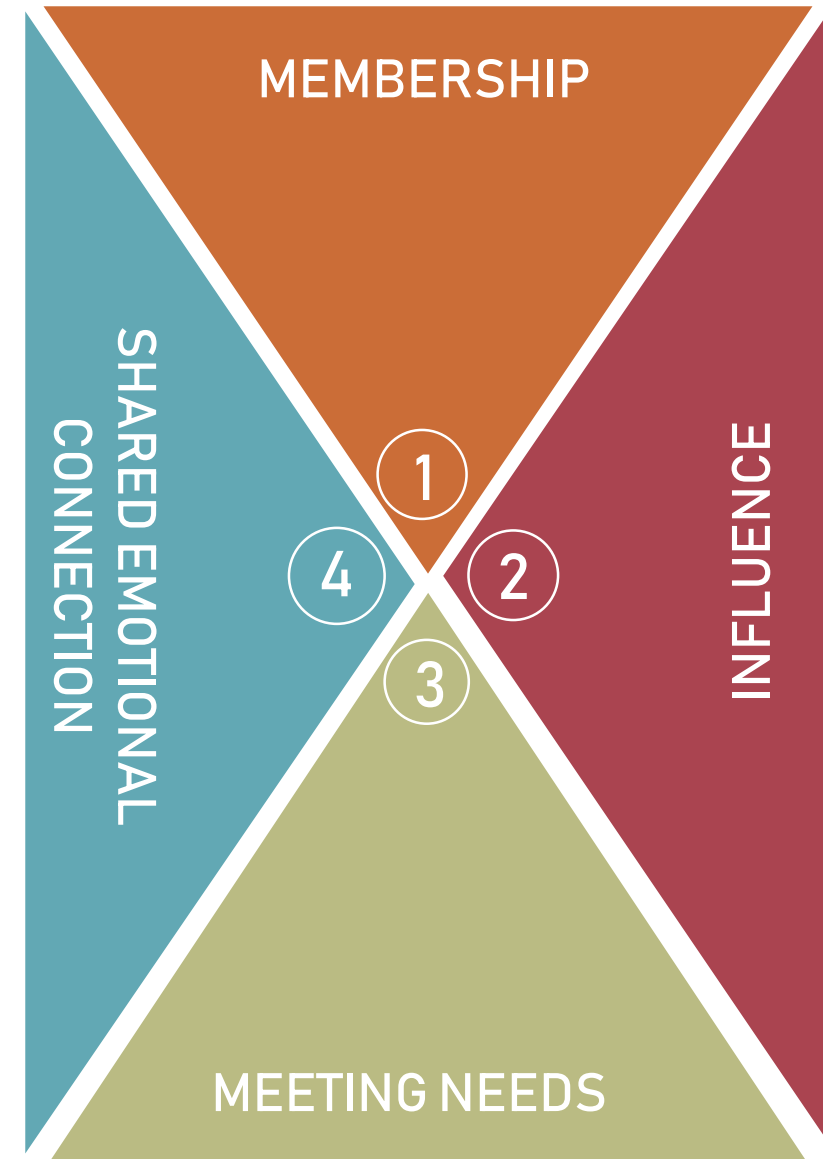
THE

# THEORY

## Theory of A Sense of Community

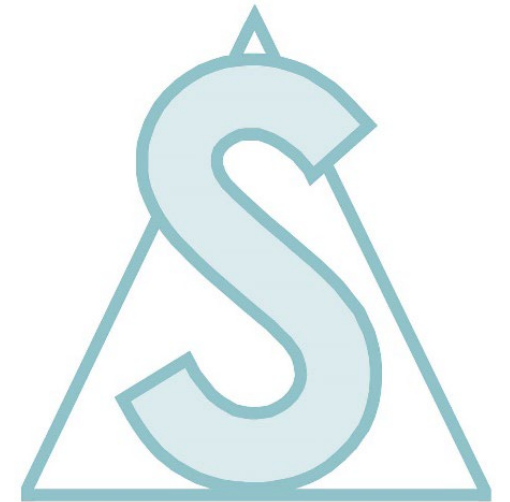
- McMillan & Chavis (1986) define sense of community as "a feeling that members have of belonging, a feeling that members matter to one another and to the group, and a shared faith that members' needs will be met through their commitment to be together."

## 4 ELEMENTS OF A SENSE OF COMMUNITY



# THE CONCEPT & BRANDING

Community is the main drive behind this five story multi-functional building. Each service and function of this building was chosen to create a mini **community** that individuals can come to **live, work & play** within. Each function is meant to foster **interaction & connection** between individuals.



Society is defined as a body of individuals living as members of a community.

# THE MASTERPLAN

⑤ PRIVATE Co-Living Apartments

④ PRIVATE Co-Living Apartments

③ PUBLIC Communal Activities

② PRIVATE Co-Working Office

① PUBLIC Coffee Shop/ Bistro & Pop Up Retail

# THE DEMOGRAPHICS

40%

Americans suffer  
from loneliness

6,604

People lived alone  
according to the 2010  
Manhattan Census  
Housing population

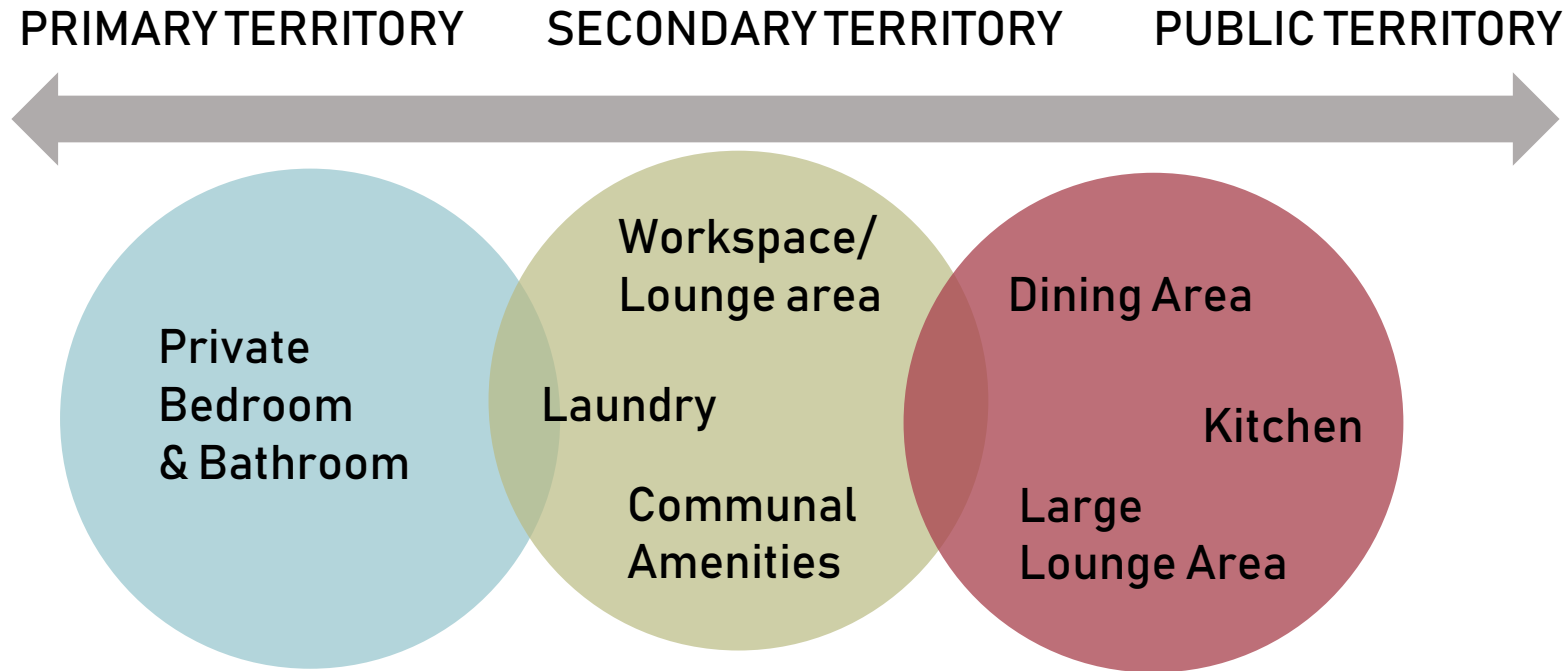


There is currently  
no type of  
communal living in  
Manhattan, KS

## WHY MHK NEEDS IT

Communal living creates a **community** where people share experiences, create connections, and make new friendships.

# THE CO-LIVING WAY



Communal living is a type of “intentional community”, where people make a conscious choice to live together as a group.

Co-living can take many forms, from shared apartment buildings to shared houses or individual apartments

The co-living space is broken down into three territories, primary, secondary and public to help with positive social interaction and giving individuals enough of their own privacy.



# THE CO-LIVING FOCUS

**10,000 sq. ft. focus:**  
**4<sup>TH</sup> Floor-Co-Living**

## **Programmatic Statement:**

*A shared living space with individual bedrooms that include a private bathroom and kitchenette. The communal environment will foster engagement between tenants.*

### **PUBLIC/SECONDARY:**

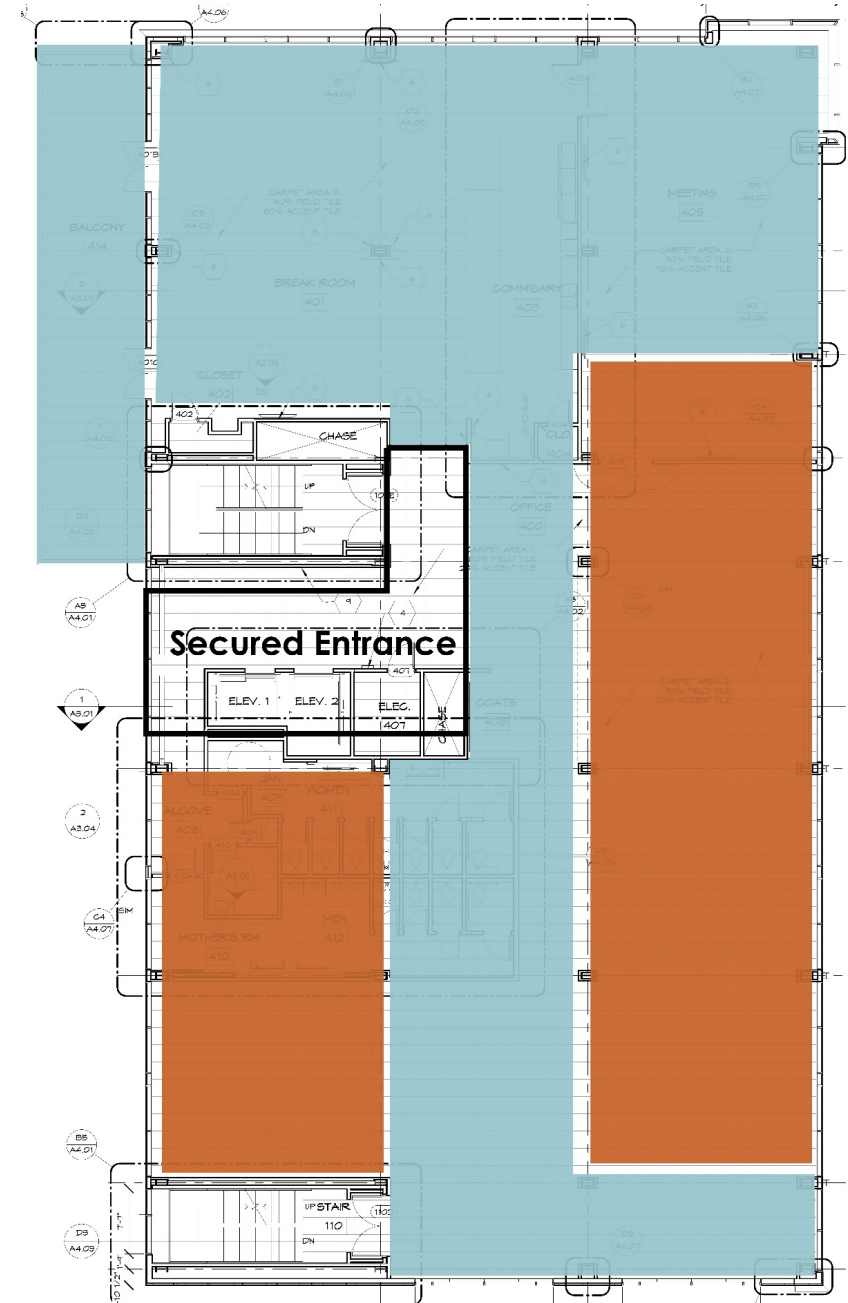
- Communal
  - Living
  - Kitchen
  - Dining
  - Laundry

### **PRIMARY:**

- One bedroom studios

 Public

 Private



THE

# SUSTAINABLE LIVING



## SOCIALLY SUSTAINABLE:

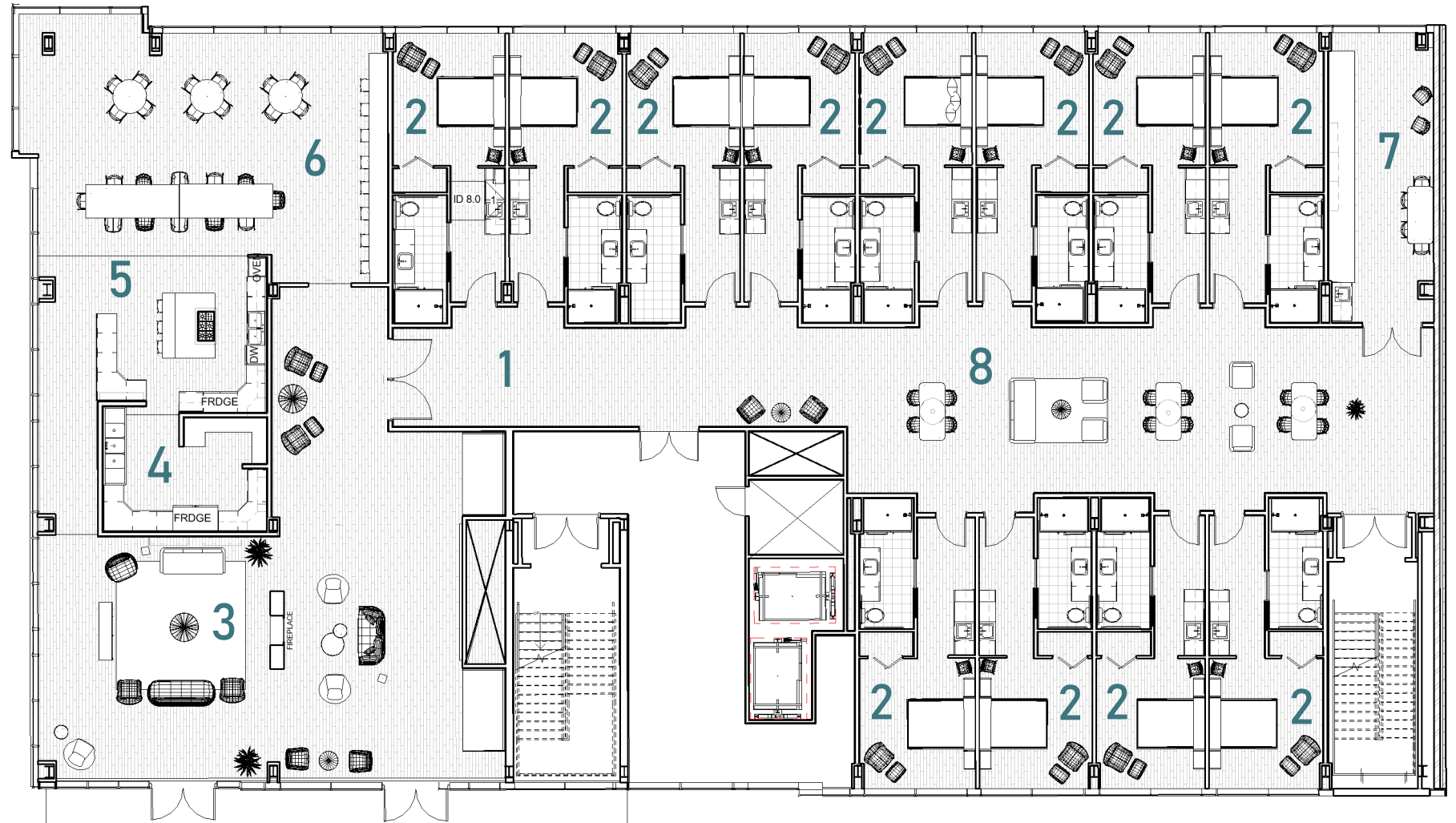
Co-living is financially sustainable for people because through this type of housing people pay one all inclusive price that includes rent, utilities, washer & dryer, supplies, and Wi-Fi

## ENVIRONMENTALLY SUSTAINABLE:

Everyone who lives in the co-living space shares the same living areas and recourses. This in return creates a smaller carbon footprint for each individual.

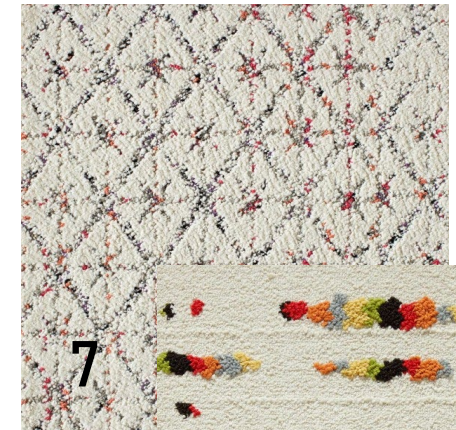
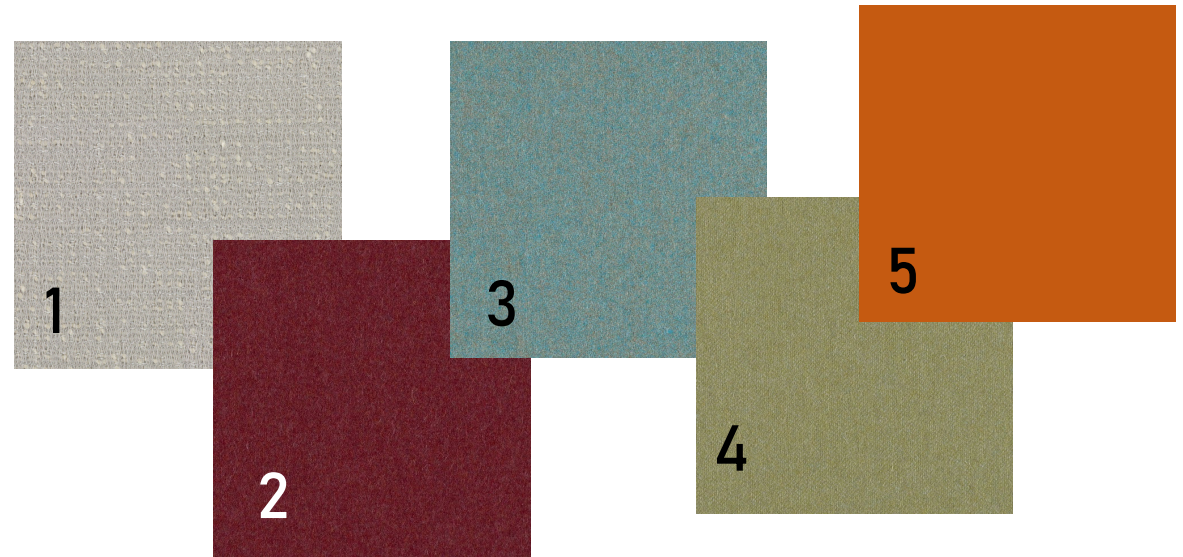
# THE FLOOR PLAN

- 1 Foyer
- 2 Bedroom Unit
- 3 Main Lounge Area
- 4 Prep Kitchen
- 5 Chef's Kitchen
- 6 Cafe
- 7 Laundry
- 8 Small Lounge



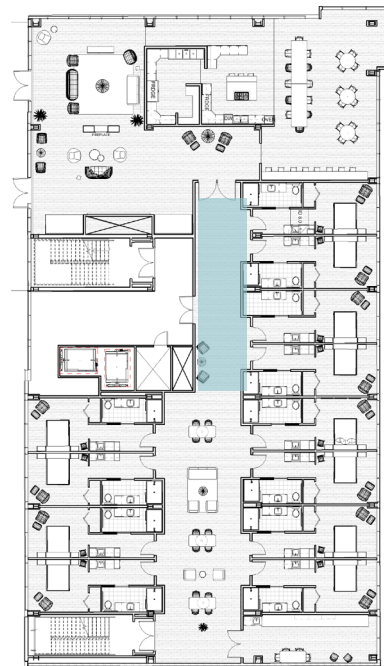
# THE AESTHETIC

- 1 Knoll Textiles- Hastings in Drizzle
- 2 DesignTex- Heather in Currant
- 3 DesignTex- Heather in Lagoon
- 4 DesignTex- Heather in Sage
- 5 Loom Source – Ode in Flamenco
- 6 Armstrong- Birch Engineered Hardwood
- 7 FLOR- Vintage Vibe in Coral
- 8 FLOR- Lilting in Multi





# THE FOYER

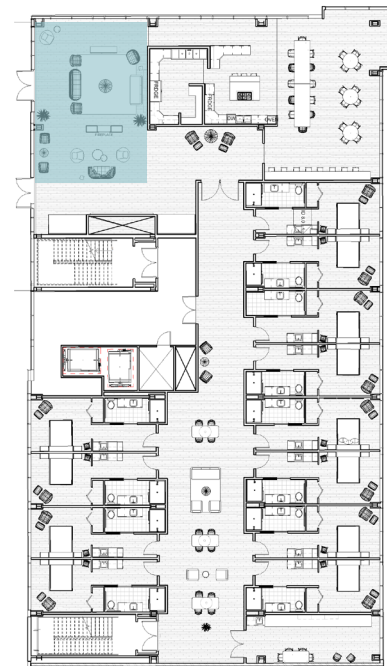
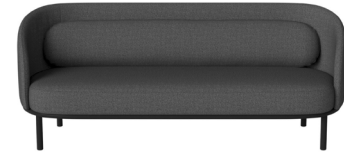


# THE FOCAL WALL



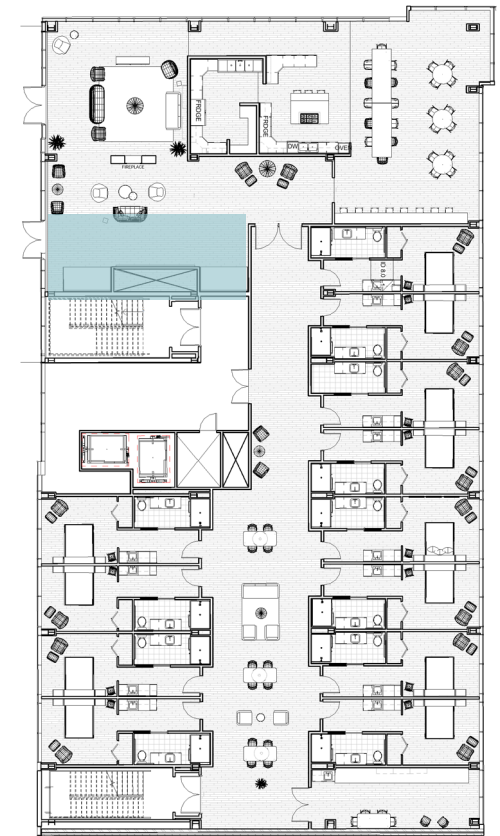


# THE LOUNGE





# THE LOUNGE





# THE DINING HALL





# THE THE CAFE



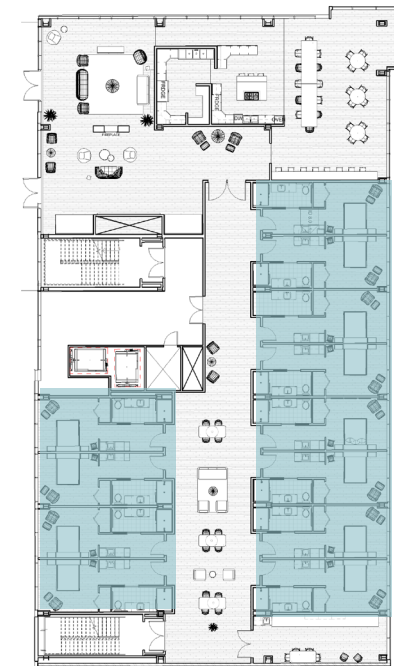
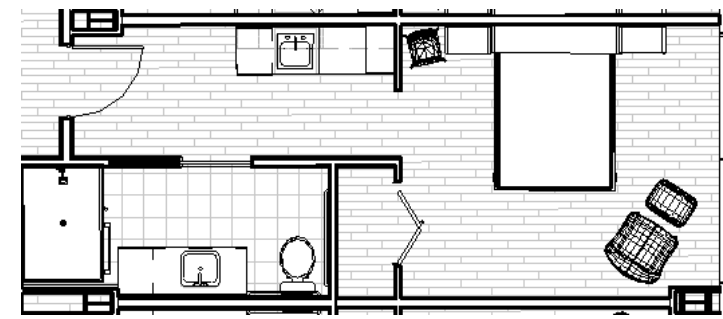


# THE SMALL LOUNGE





# THE BEDROOM SUITE



**THANK YOU!**

**ANY QUESTIONS?**